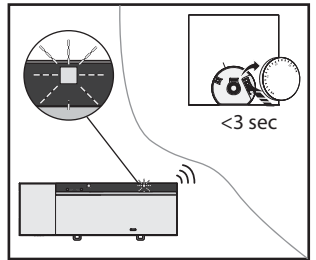
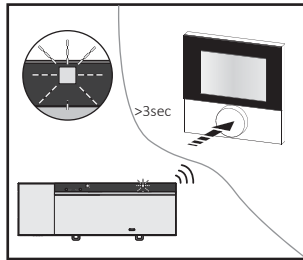
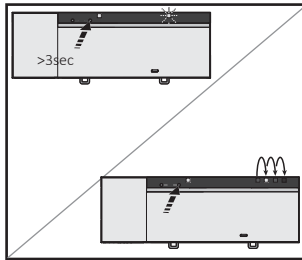
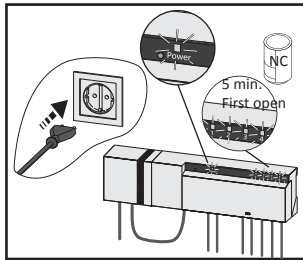
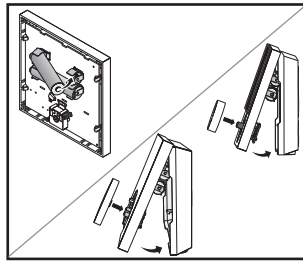
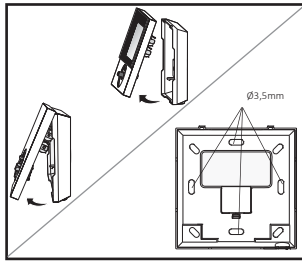
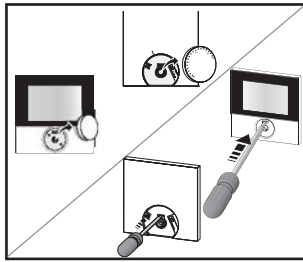


KVIKGUIDE • MONTAGE AF V3 IP TRÅDLØST GULVVARMEANLÆG, 230V

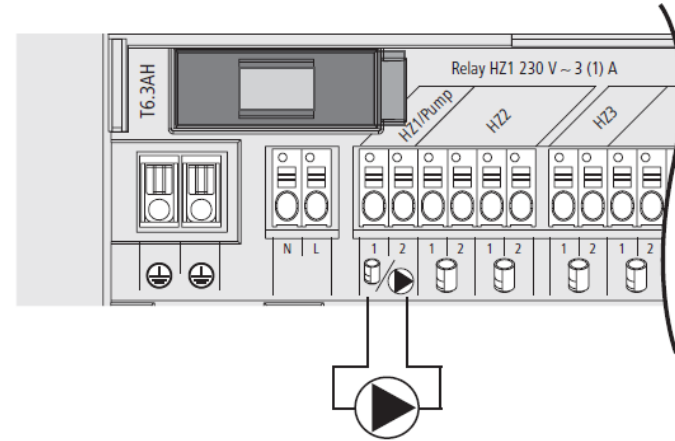
FØRSTE IBRUG-TAGNING



INSTALLATION AF RUMTERMOSTATER



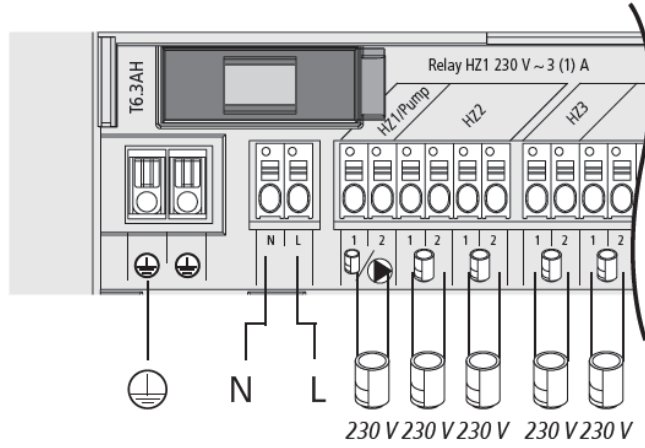
EL-TILSLUTNING PUMPE START/STOP - 230V



Varmezone 1 (HZ1/pumpe) kan alternativt bruges til at styre en cirkulationspumpe. Cirkulationspumpen tilsluttes på følgende måde:

Pumpestyringen aktiveres eller deaktiveres enten direkte på gulvvarmestyringen eller på den digitale rumtermostat.

TILSLUTNING AF AKTUATORER



MONTERING AF SYSTEMBOKSEN

